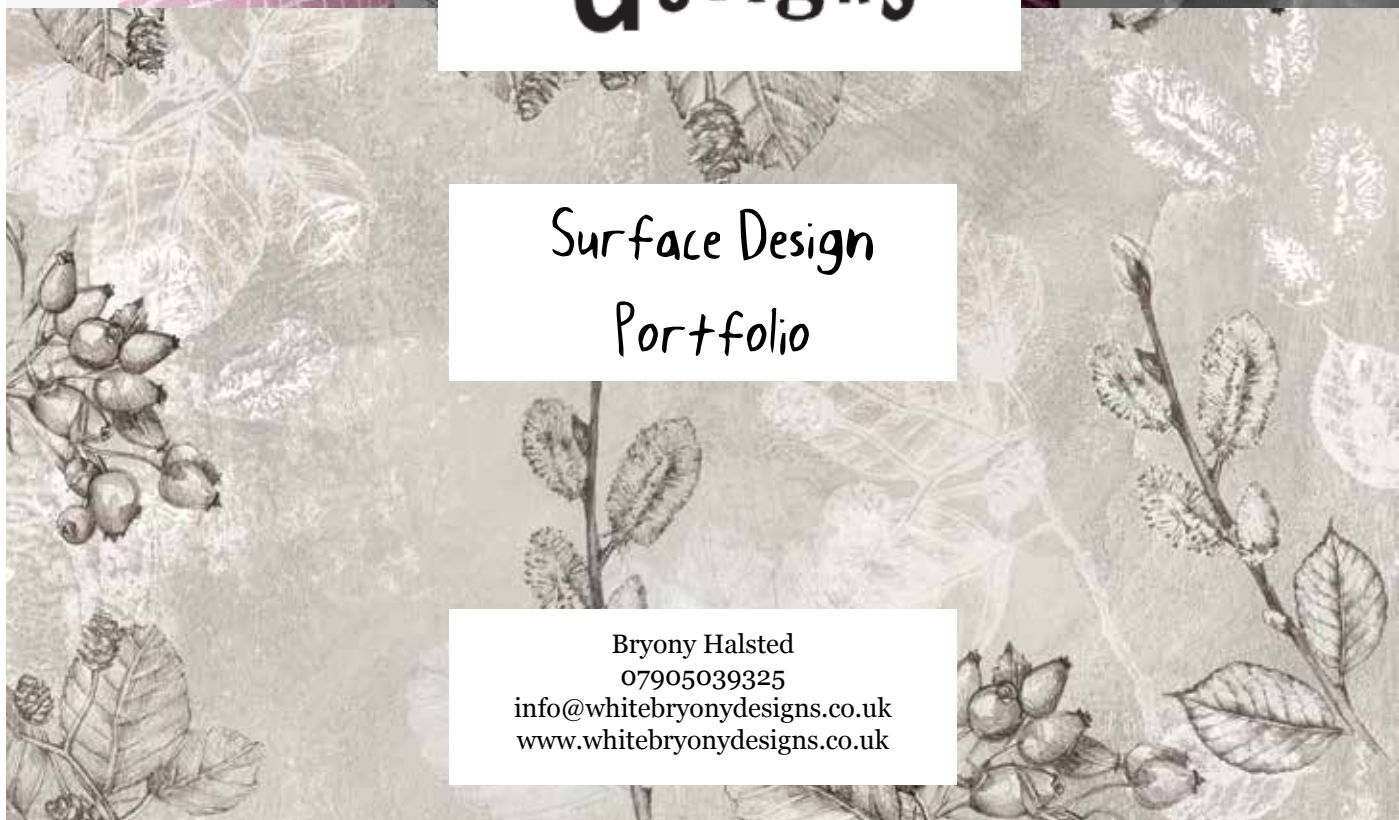




**White \***  
**Bryony**  
**\* designs**

Surface Design  
Portfolio

Bryony Halsted  
07905039325  
info@whitebryonydesigns.co.uk  
www.whitebryonydesigns.co.uk





Oriental Cherry Blossom  
(placement designs)



Oriental Blossom  
placement design



Cherry Blossom Heart  
placement design



Hello, I'm a UK surface designer and illustrator called Bryony Halsted. My brand White Bryony Designs aims to bring the joy of the natural world to others through illustration.

I use the English countryside where I live as my main inspiration, mixed with my love of travel, heritage, and collected ephemera to bring my designs to life.

In my designs expect to see plenty of strong detailed drawings, the playfulness of added collage, and images full of textural layers. I generally work in paper collage, watercolour pencils and paint.

Thank you for taking the time to view my work.

**\* White Bryony designs \***





## Butterfly Garden (placement design)





Butterfly Pastels  
(seamless repeat)





wildflower pansy  
(duckegg)

midnight rose briar  
(teal cocoa)

octagonal rosehips  
(pretty pink)





art deco hex  
(duckegg pebble)

Damson tree birds  
(seamless repeat)

rosebriar tiles (duckegg)



White \*  
Bryony  
\* designs

Apple Blossom Blush  
pale pink



Birdsong blackbirds







placements available

Apple Blossom Blush  
(seamless repeat)



Apple Blossom Blush  
cream



Trailing Honeysuckle  
Pale Green  
(seamless repeat & motif)



Bird in the honeysuckle  
(placement design)



Trailing Honeysuckle Sage  
(seamless repeat)



Trailing Honeysuckle Pink



New growth horizontal



New growth vertical



## Honeysuckle Designs



Trailing Honeysuckle Pink  
(seamless repeat)





Floral Elements  
as placements





# Garden Cats



\* **White Bryony** designs \*



Green Herb Drifts  
(placement designs)





Petal Stripes  
(seamless repeat)

White Geranium border



Delicate daisy row border



London Pride flower border



\* **White Bryony designs** \*





cocktail paintings



♥ Home for our tribe ♥



Little houses (seamless repeat & placements)



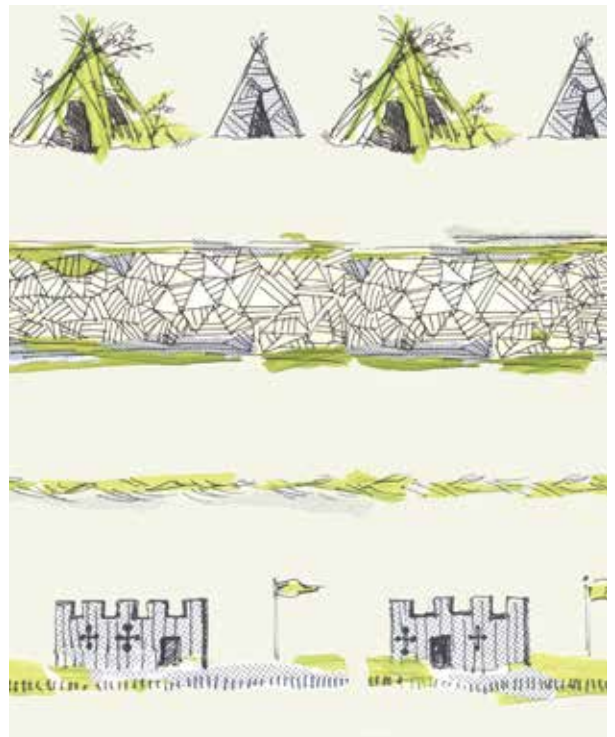
Dens (seamless repeat)



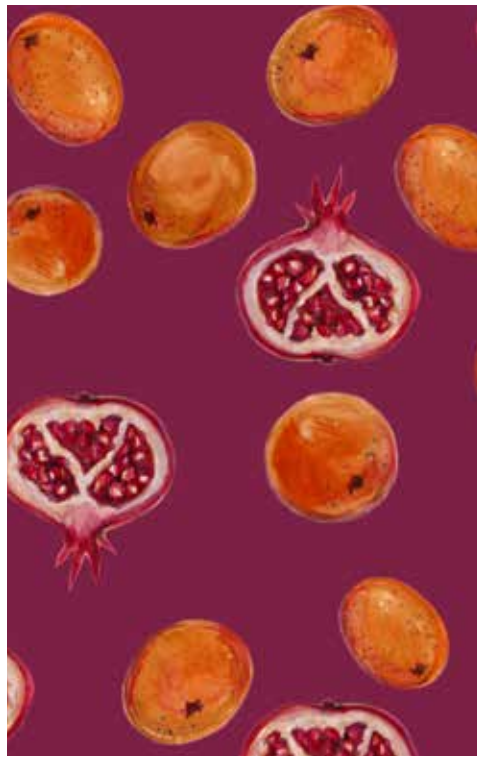
Coming home is one of the most beautiful things ♥



Field of Mushrooms (seamless repeat)







Festive Fruits designs



'Merry & Bright'



'Jolly Santas'



'Hello'



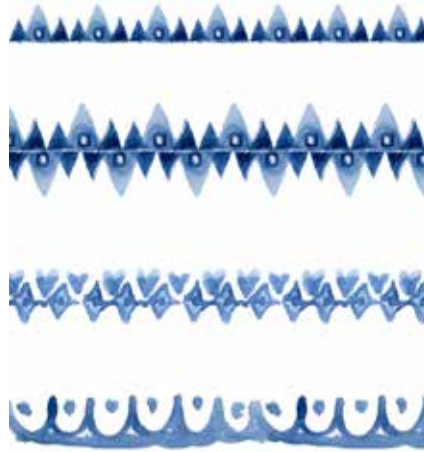
'Noel snowglobe'





'Love folk' placements  
cream / dove grey





'Blue and White Love' placements  
and border patterns





Hydrangea Blues on cyan background

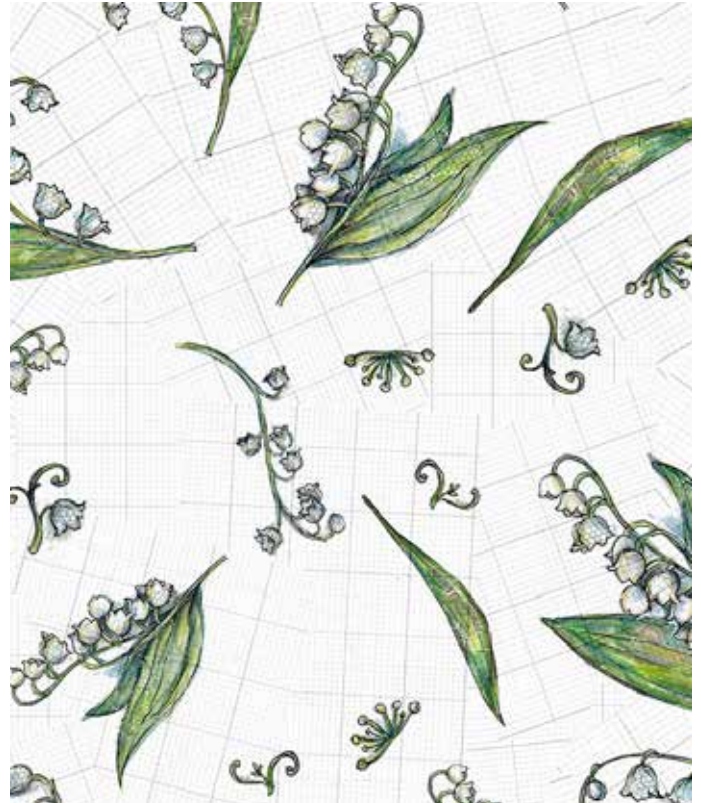


Hydrangea Blues on stone background

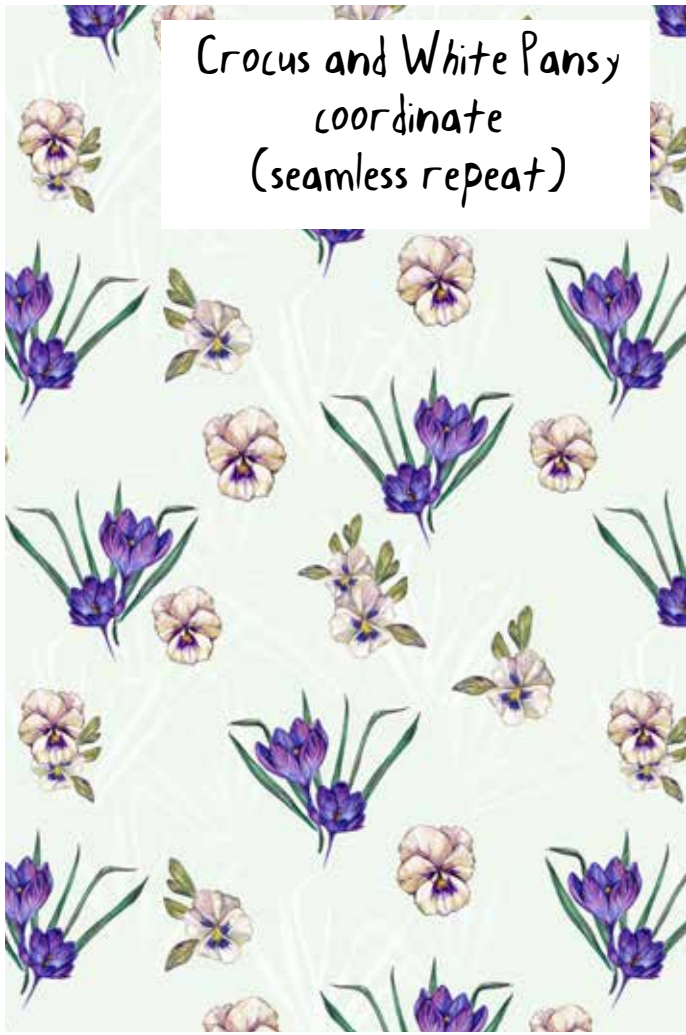


## Bluebells & Lilybells

(2 seamless repeat designs & motif placements)



Crocus and White Pansy  
coordinate  
(seamless repeat)



Spring Garden Flowers  
(seamless repeat)







Spring Garden Flowers  
(seamless repeat & placement elements)





Dahlia Garden Cream



Dahlia Garden Mint Green

Dahlia Garden  
(Seamless repeat & Placement design)

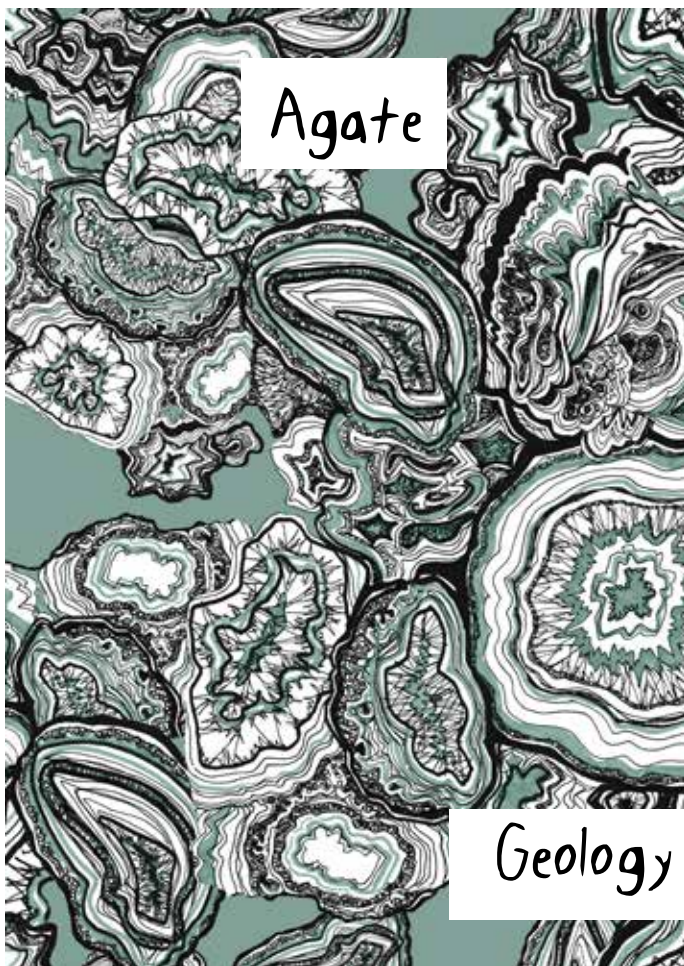




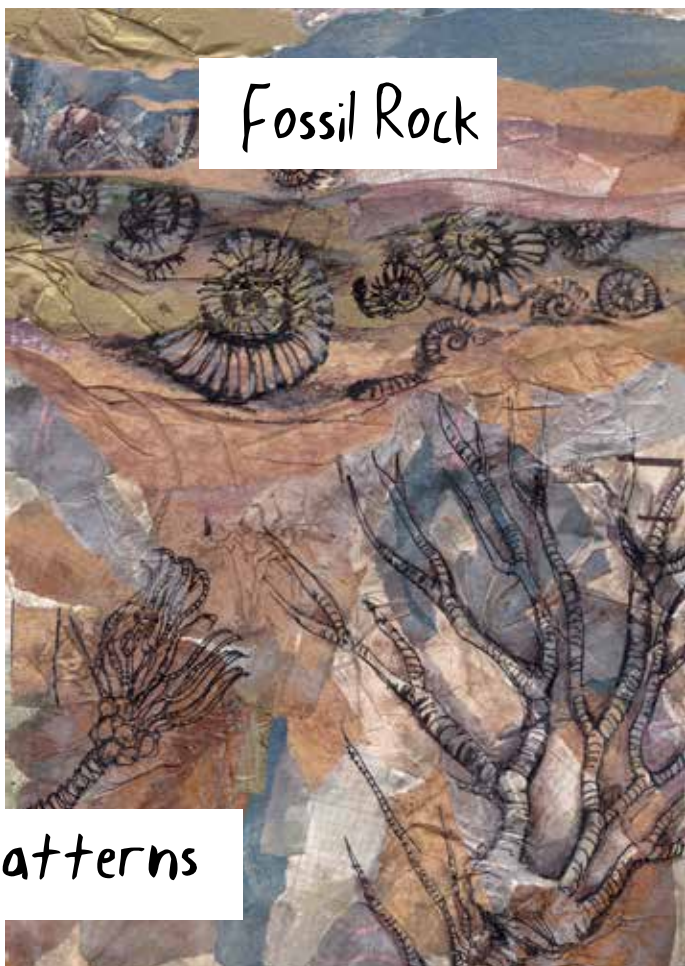
Rock Strata



Rock Crystals



Agate



Fossil Rock

Geology Patterns



wild cherry

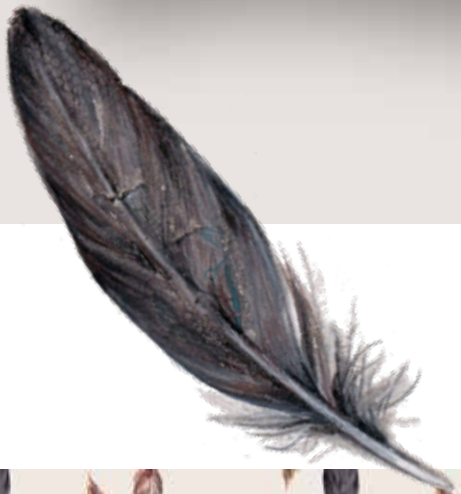
Detailed Botanical Illustration



elderberries



hazelnuts



Fallen Feathers  
(seamless repeat)





## Ferns & Freedom (Placement Design)





Cowparsley at Sunset  
(Placement Design)





Nasturtiums  
(placement)







Terracotta Stamp  
(blender repeat)



New Dawn (repeat)

Heat Haze Palm (placement)





Dianthus Pinks  
(seamless repeat)

Floral Teapot placement



Pink Florals placement

Birthday Florals placement



Dianthus Pinks



Japanese Anemone placement



# \* White Bryony designs \*

If any of my designs would suit your product lines and you wish to discuss licensing, I'd love to hear from you. It would be wonderful to work with you!

Please find my social media pages with links below.

Thanks again for taking the time to look through my work.



<https://www.whitebryonydesigns.co.uk>

<https://www.instagram.com/whitebryonydesigns/>



Bryony Halsted  
(+44) 07905 039325

info@whitebryonydesigns.co.uk  
www.whitebryonydesigns.co.uk